

4Dfor Flex Read-me

V 1.1 091105

Content

The delivered material contains several folders:

4DforFlex SWC components : the components

- Flex4D_Components.swc
- Flex4D_Controls.swc
- Flex4D_SQL.swc

see the manual for use in your Flex projects

Demos, HDIs and Tutorial :

Databases : the 4D databases used with Flex demos

- 4DSpendings_demo** is used for Spendings demo
- 4dDB-Improve securityHDI with PDF article
- Other demos and HDIs work with **4DforFlex_demo**

Flex Projects :

the Flex projects for demos and HDIs that can be imported directly in Flex Builder

- AIRSQLAdmin: a generic SQL admin AIR application
- sqladmin: same demo, but Flex application (running in a browser)
- Spending: showing how to propose the same functionality in a browser as for client/Server
- Call4DHD13: how do I call a 4D stored proc from Flex?
- Call4DHD12: same, but for AIR
- CrudHDI: how do I perform CRUD operations (Create – Retrieve - Update - Delete) on 4D records from Flex?
- SelectHDI Simple: how do I execute SQL queries from Flex?
- SelectHDI simpleSecured: how do I execute SQL queries from Flex after a secured authentication (requires 4D for Flex 1.1)
- ImproveSecurityHDI: how do I improve security in 4D for Flex 1.0 ?
- MyFirst4DforFlexApp.pdf**: a tutorial in PDF format guiding your first steps using 4D for Flex
- myFirstFourFlexApp**: the Flex project

Documentations:

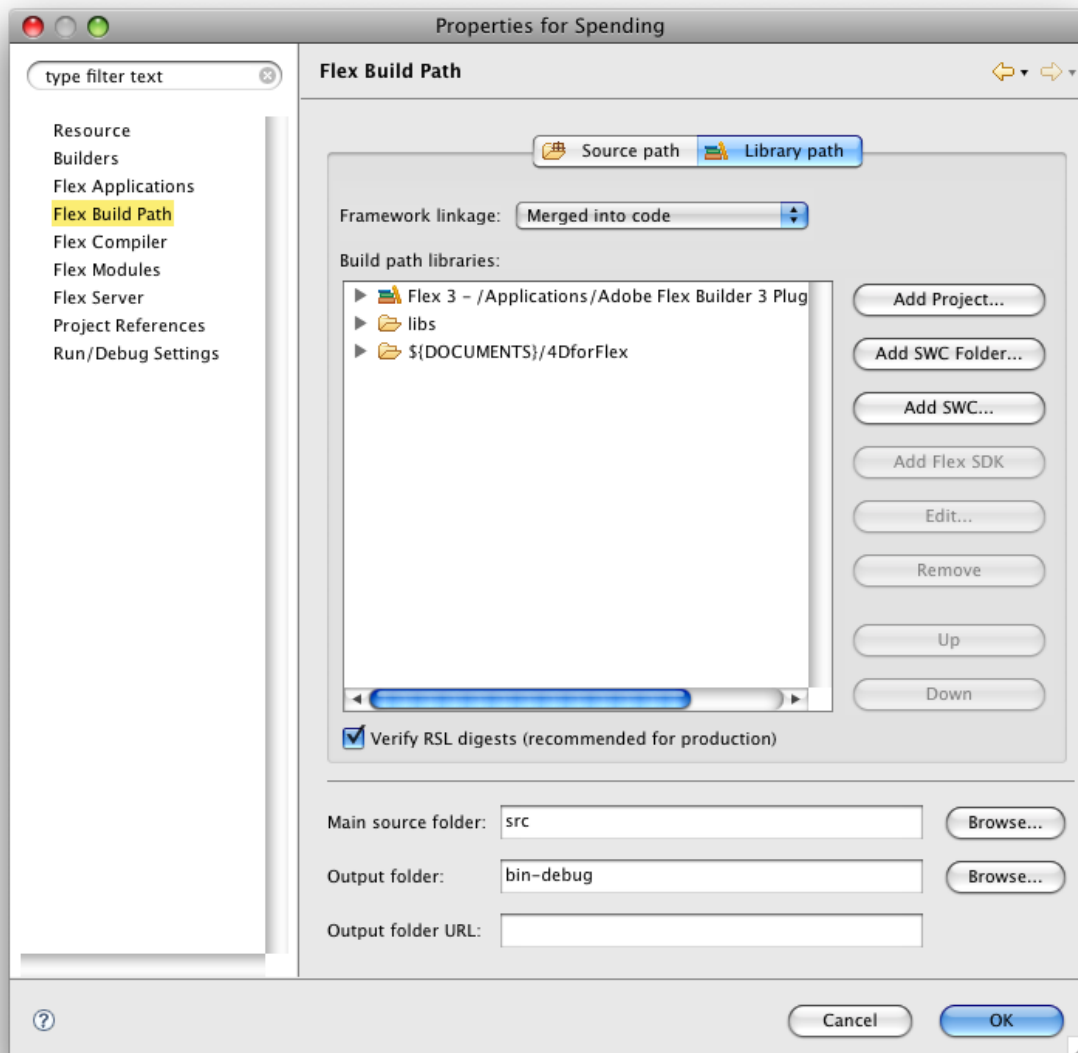
- 4DforFlex_ASDoc: HTML documentation of the 4D for Flex classes
- **Manual.pdf**: PDF documentation of the 4D for Flex component
- **FAQ_4DForFlex.pdf**: a short PDF FAQ

Tools :

- TraceConsole.air : the TraceConsole AIR application
- TraceConsole: contains the TraceConsole Flex project.

MODIFYING LIBRARY PATH AND OUPUT FOLDERS

In order to be able to compile the Flex samples, you may need to set the correct paths for each Flex project. Right-click on the project, choose 'Properties' item, then select 'Flex Build Path' tab, you should get a dialog similar to this one:



OUTPUT FOLDER PATH

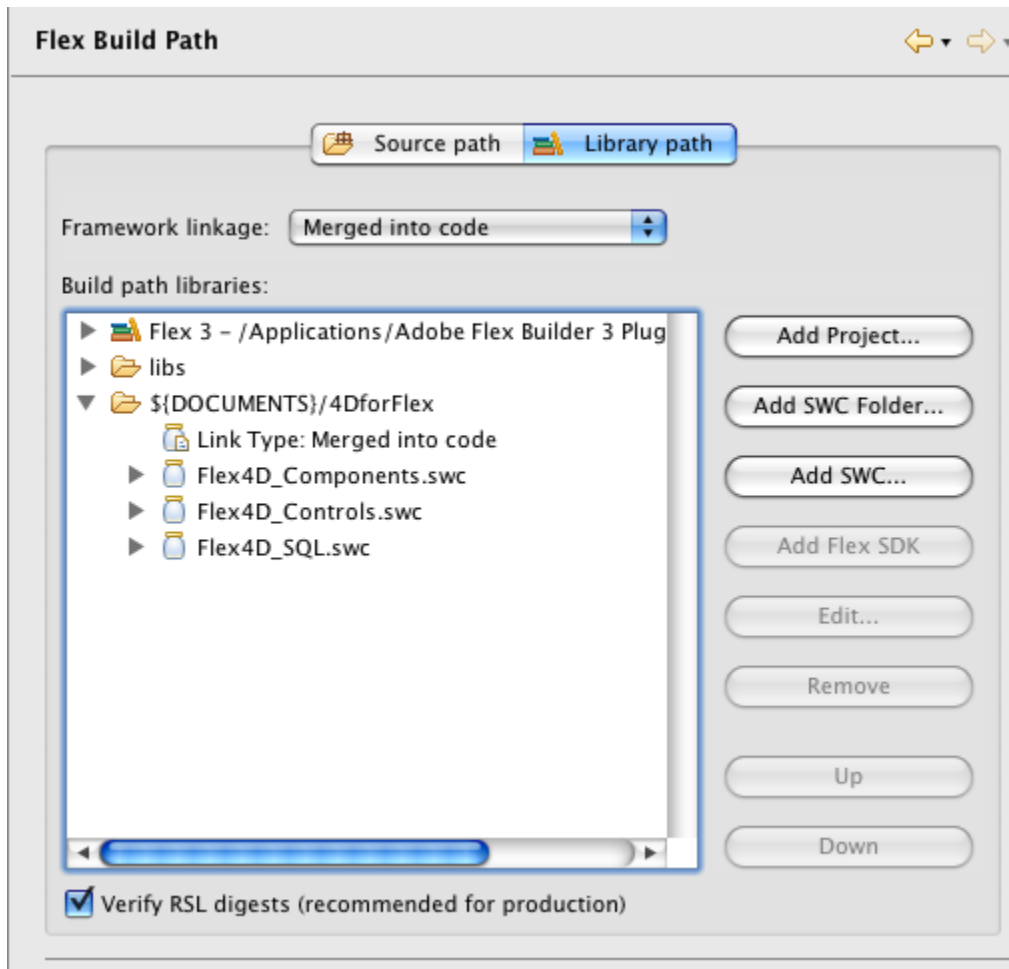
You may need to edit the output folder path. You can set it to the WebFolder path of the corresponding 4D Database to facilitate testing.

LIBRARY PATH

You may also need to set the paths to the 4D for Flex libraries: Flex4D_SQL.swc, Flex4D_Controls.swc, Flex4D_Components.swc.

You can do it easily using the environment variable DOCUMENTS.

All the provided example projects reference for Library path: `${DOCUMENTS}/4DforFlex`



The DOCUMENTS variable should reference the path to your workspace. So, if you just create a folder named 4DforFlex in that folder and put the swc in it, it should work independently of absolute paths.

You can edit DOCUMENTS in the preferences of FlexBuilder, in General/Workspace/Linked Resource item.

